

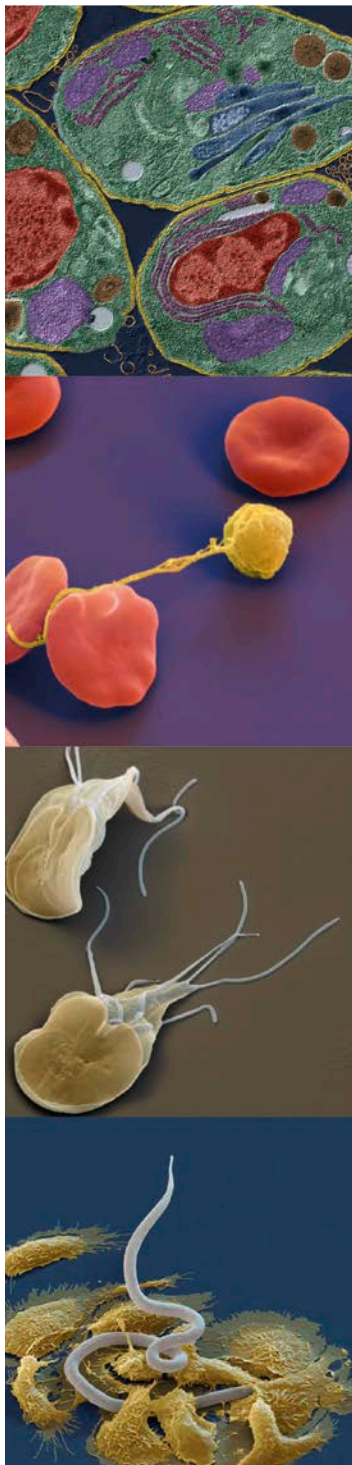


Berlin Parasitology Seminar -Series 2015

Humboldt Graduate School (HGS) – Luisenstraße 56, 10117 Berlin, Room 144

Veterinarium Progressum (VP) – Oertzenweg 19b, 14163 Berlin

5 pm (final location will be announced)



- | | |
|------------------------------------|---------------------------------------------------------------------------------------------------------------------------------------------------------------------------------|
| 13 th January
(VP) | Stig Thamsborg (University of Copenhagen, DK)
Interactions between nematodes, other infections and diet in pigs |
| 10 th February
(MPI) | Julius Hafalla (LSHTM London, UK)
Dissecting T cell responses to malaria pre-erythrocytic stages |
| 10 th March
(RvO) | Peter Wenk (Eberhard Karls University Tübingen, DE)
Vaccination against Malaria |
| 14 th April
(VP) | Hanna Lotter (Bernhard-Nocht Institute Hamburg, DE)
Hepatic amebiasis: Immune mechanisms underlying disease development and sex difference |
| 26 th May
(HGS) | Sam Dean (University of Oxford, UK)
The flagellum transition zone - enabling compartmentalisation of the eukaryotic cell |
| 9 th June
(VP, 4pm) | Clarissa Prazeres da Costa (Technical University Munich, DE)
Immunosuppressive and transgenerational effects on allergic asthma during <i>Schistosoma mansoni</i> infection |
| 7 th July
(VP) | Murray Selkirk (Imperial College London, UK)
Nematode cholinesterases and cholinergic regulation of the immune system |
| 8 th September
(VP) | Ildiko Dunay (University Hospital Magdeburg, DE)
Cerebral <i>Toxoplasma</i> infection, from monocytes to neuronal alterations |
| 13 th October
(VP) | S. Subash Babu (NIH Chennai, IN)
What lies within: Co-infections and immunity in the context of helminths and tuberculosis |
| 10 th November
(VP) | Matthew Taylor (University of Edinburgh, UK)
Th2 cell fate, function, and tolerance during chronic helminth infection |
| 8 th December
(VP) | Peter Geldhof (Ghent University, BE)
An integrated approach to unravel the interplay between <i>Ascaris suum</i> and its porcine host: implications on diagnosis and control |

Contact:

Katja Balster
k.balster@fu-berlin.de

Susanne Hartmann
susanne.hartmann@fu-berlin.de