

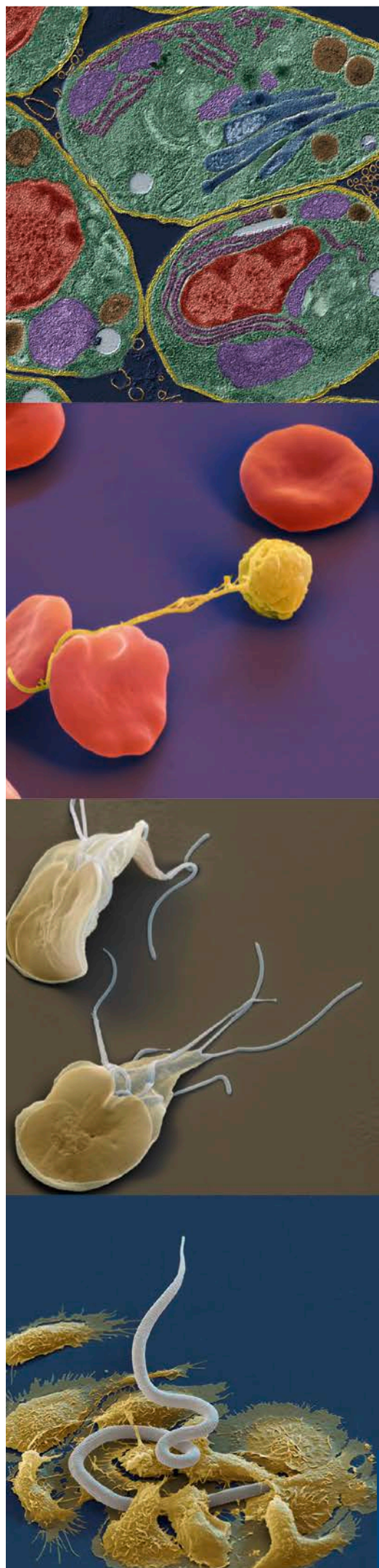


# Berlin Parasitology Seminar -Series 2015

Humboldt Graduate School (HGS) – Luisenstraße 56, 10117 Berlin, Room 144

Veterinarium Progressum (VP) – Oertzenweg 19b, 14163 Berlin

5 pm (final location will be announced)



- |                                    |  |
|------------------------------------|--|
| 13 <sup>th</sup> January<br>(VP)   | <b>Stig Thamsborg (University of Copenhagen, DK)</b><br>Interactions between nematodes, other infections and diet in pigs  |
| 10 <sup>th</sup> February<br>(MPI) | <b>Julius Hafalla (LSHTM London, UK)</b><br>Dissecting T cell responses to malaria pre-erythrocytic stages   |
| 10 <sup>th</sup> March<br>(RvO)    | <b>Peter Wenk (Eberhard Karls University Tübingen, DE)</b><br>Vaccination against Malaria  |
| 14 <sup>th</sup> April<br>(VP)     | <b>Hanna Lotter (Bernhard-Nocht Institute Hamburg, DE)</b><br>Hepatic amebiasis: Immune mechanisms underlying disease development and sex difference                                   |
| 26 <sup>th</sup> May<br>(HGS)      | <b>Sam Dean (University of Oxford, UK)</b><br>The flagellum transition zone - enabling compartmentalisation of the eukaryotic cell   |
| 9 <sup>th</sup> June<br>(VP, 4pm)  | <b>Clarissa Prazeres da Costa (Technical University Munich, DE)</b><br>Immunosuppressive and transgenerational effects on allergic asthma during <i>Schistosoma mansoni</i> infection  |
| 7 <sup>th</sup> July<br>(VP)       | <b>Murray Selkirk (Imperial College London, UK)</b><br>Nematode cholinesterases and cholinergic regulation of the immune system  |
| 8 <sup>th</sup> September<br>(VP)  | <b>Ildiko Dunay (University Hospital Magdeburg, DE)</b><br>Cerebral <i>Toxoplasma</i> infection, from monocytes to neuronal alterations  |
| 13 <sup>th</sup> October<br>(VP)   | <b>S. Subash Babu (NIH Chennai, IN)</b><br>What lies within: Co-infections and immunity in the context of helminths and tuberculosis   |
| 17 <sup>th</sup> November<br>(VP)  | <b>Matthew Taylor (University of Edinburgh, UK)</b><br>Th2 cell fate, function, and tolerance during chronic helminth infection  |
| 8 <sup>th</sup> December<br>(VP)   | <b>Peter Geldhof (Ghent University, BE)</b><br>An integrated approach to unravel the interplay between <i>Ascaris suum</i> and its porcine host: implications on diagnosis and control |

**Contact:**

Katja Balster  
k.balster@fu-berlin.de

Susanne Hartmann  
susanne.hartmann@fu-berlin.de