

Verdauungsapparat des Vogels

Situseminar II: Vogel I

Verdauungsapparat

Mundhöhle - Oropharynx

Oesophagus - Kropf (Ingluvies)

Magen: Drüsen- und Muskelmagen

Dünndarm: Duodenum
Jejunoileum

Leber & Pankreas

Dickdarm: Caeca
Colorectum

Kloake - Bursa fabricii

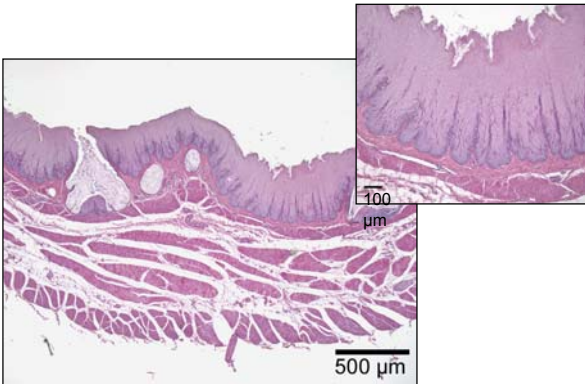
Oropharynx



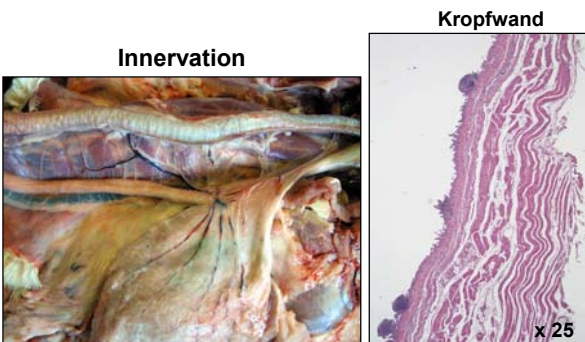
Oesophagus & Ingluvies



Wand des Oesophagus



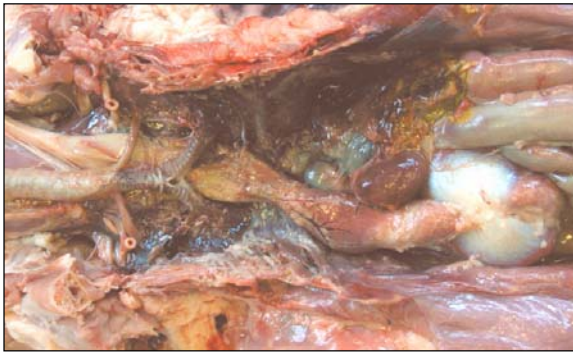
Oesophagus & Kropf



Gastrointestinaltrakt



Drüsen- und Muskelmagen

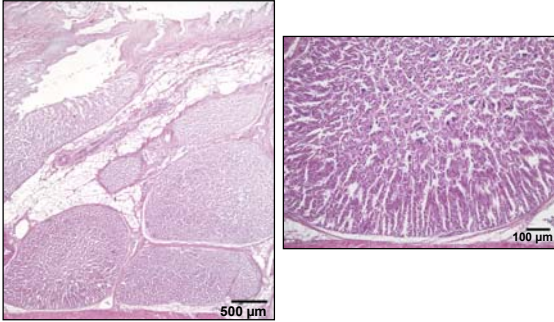


Drüsen- und Muskelmagen

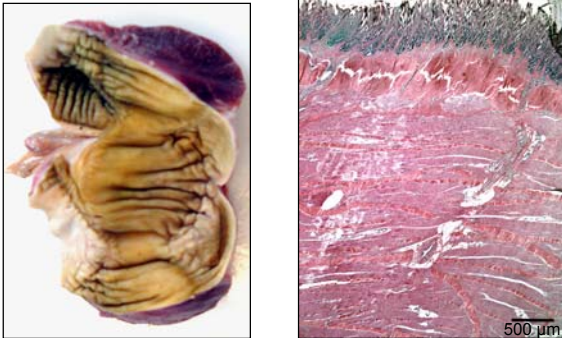


Drüsenmagen

Magendrüsen

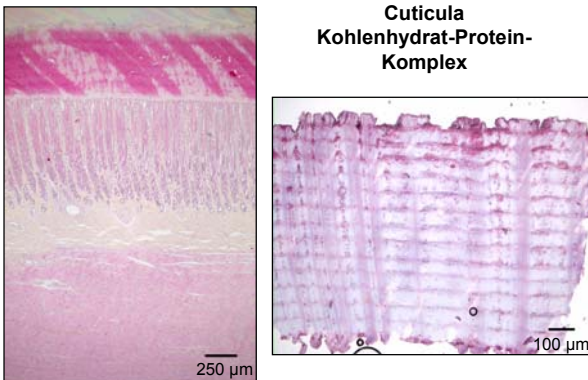


Muskelmagen

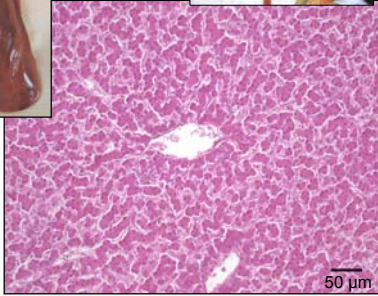


Wand des Muskelmagens

Cuticula
Kohlenhydrat-Protein-
Komplex



Leber



Intestinaltrakt

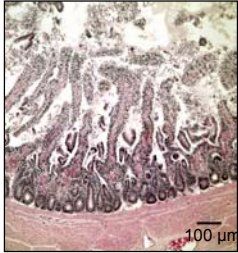


Intestinaltrakt

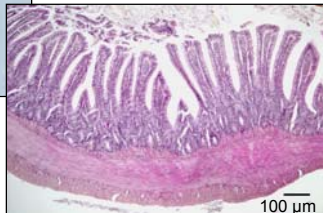


Duodenum & Pankreas

Duodenalwand

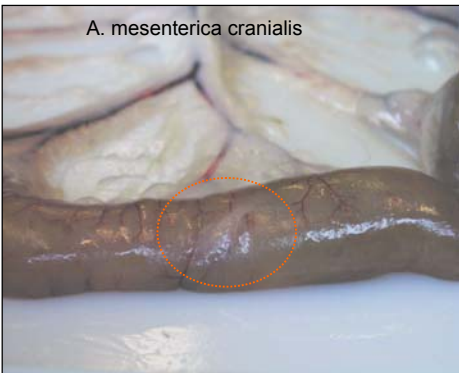


Jejunum/Ileum



Meckelsches Divertikel

A. mesenterica cranialis



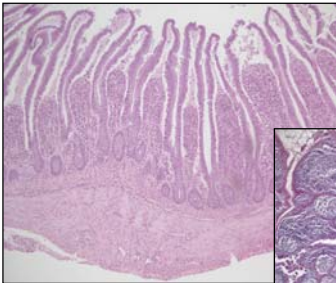
Caeca



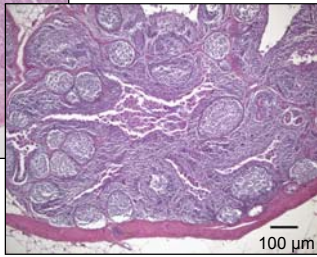
Valva ileorectalis



Caecum



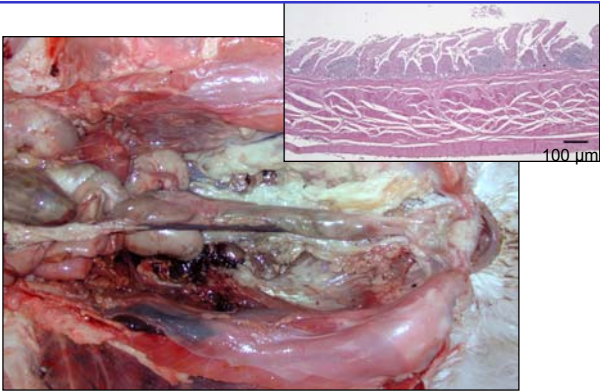
Tonsilla caecalis



Corpus

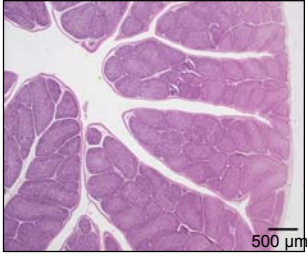
100 µm

Colorectum



100 µm

Kloake - Bursa fabricii



Cortex: lymphoreticulär
Medulla:
lymphoepithelial

